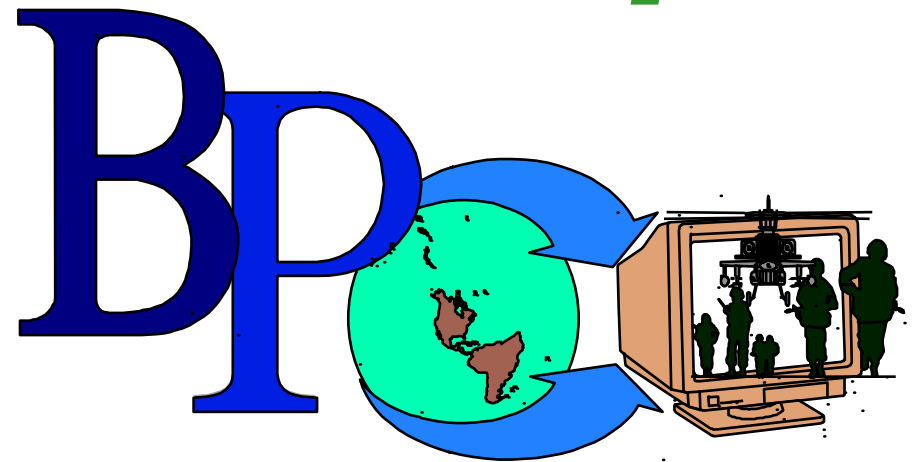


LIGHTNING DIVISION



78th Battle Projection Group



"WE PUT THE POWER IN YOUR EXERCISE"

1st Brigade (BCST), 78th TSD -



78TH BPG MISSION



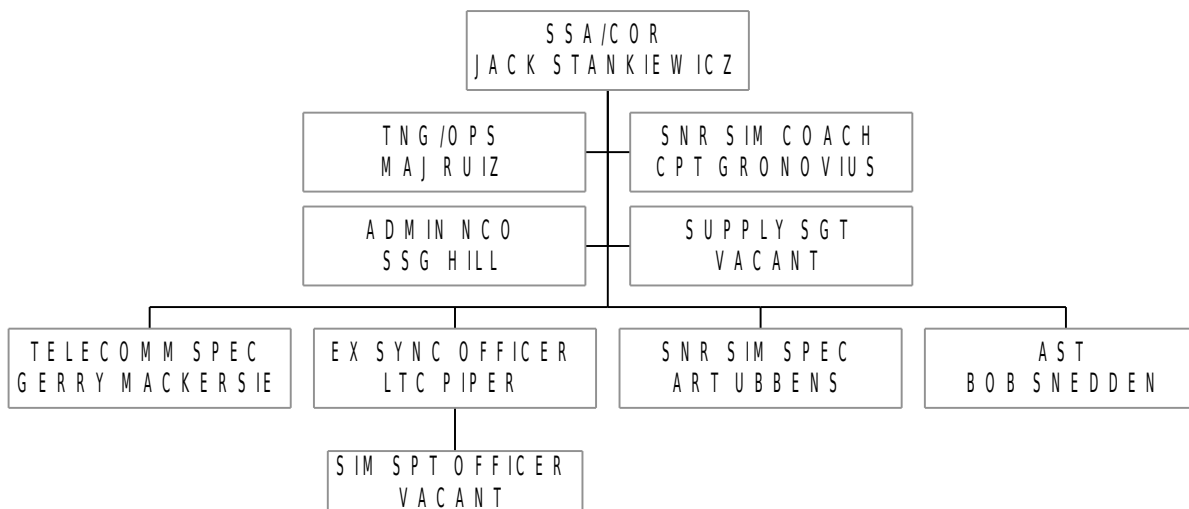
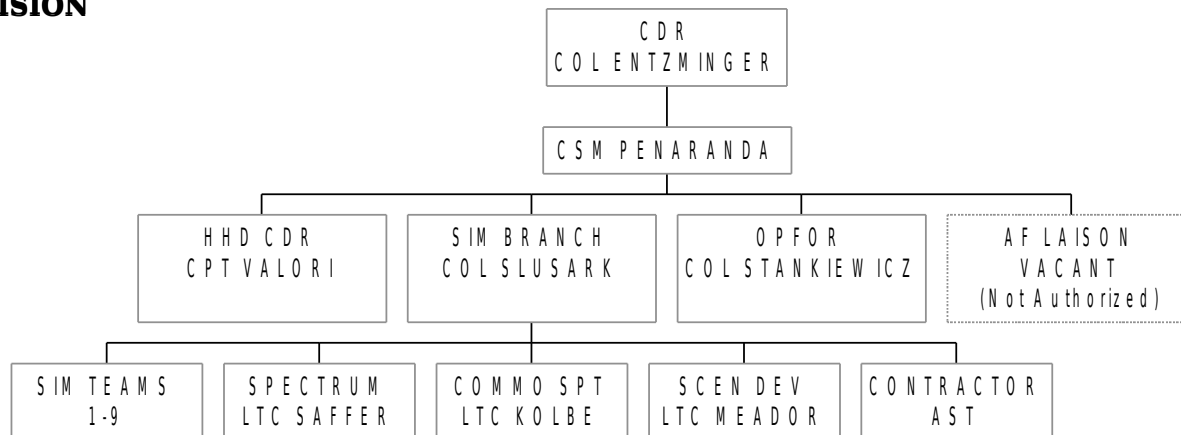
The Battle Projection Group supports simulation supported command and staff training exercises for U.S. Army National Guard and U.S. Army Reserve combat arms, combat support, and combat service support units with software, hardware and technical expertise.

Upon mobilization, assists Mobilization Station Commanders in validating mobilized units for deployment.

1st Brigade (BCST), 78th TSD -



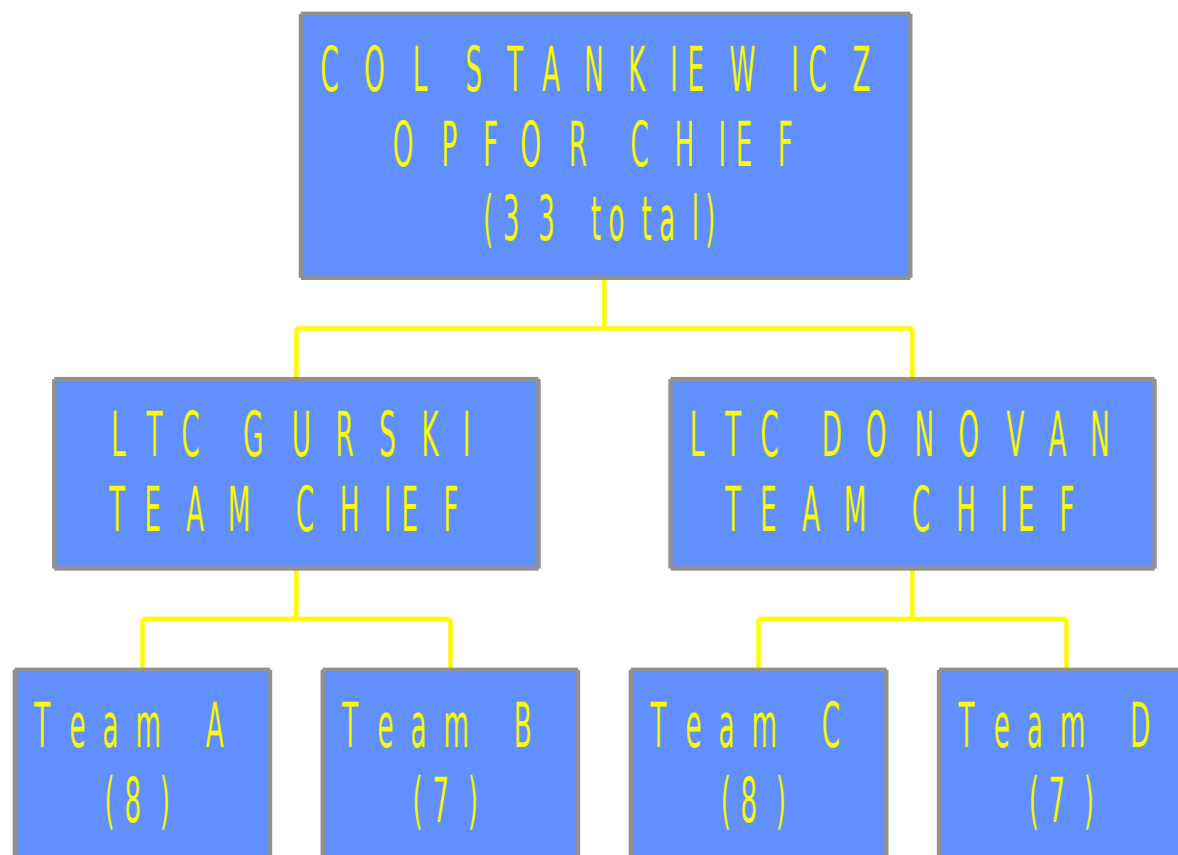
BPG ORGANIZATION



1st Brigade (BCST), 78th TSD -



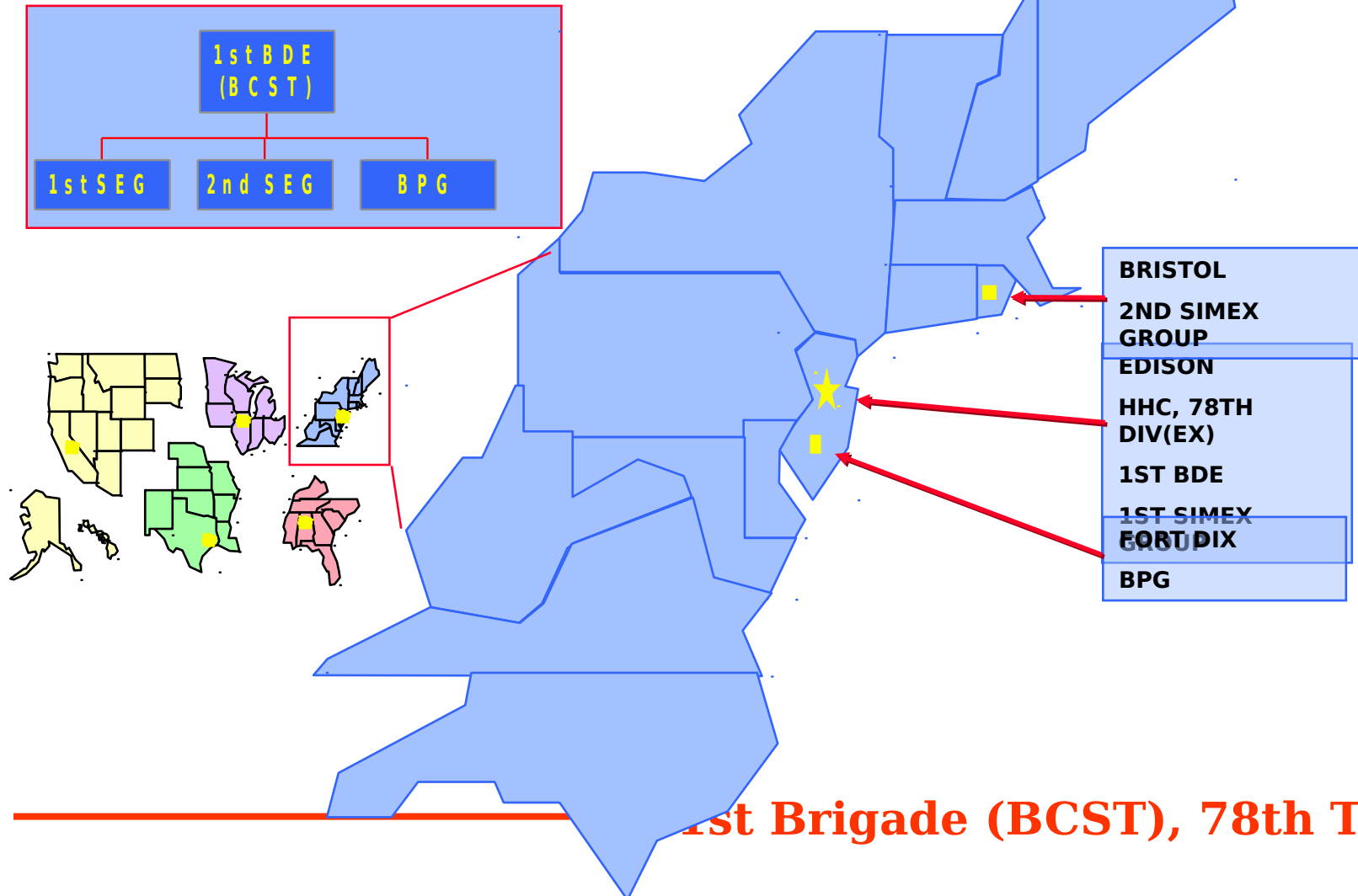
OPFOR, 78TH DIV (EX)



1st Brigade (BCST), 78th TSD -



1ST BDE (BCST) AREA OF RESPONSIBILITY





OPFOR EXERCISE SUPPORT WORKLOAD

OPFOR	FY99	FY00	FY01	FY02
JANUS	3	1	0	0
SPECTRUM	0	3*	1*	1*
BBS	3	2	5	3
CBS	5	5	5	5
CSS/TSS	1	2	1	3

*Phasing out JANUS and picking up SPECTRUM. (SPECTRUM exercises are estimated)

FY01 and FY02 are missions accepted, Others may be scheduled at a later date

1st Brigade (BCST), 78th TSD -



Type of Units Exercised

- MP Brigades
- Engineer Brigades
- Field Artillery Brigades
- CSS Units: QM, TC, ORD, MED
- 29th ID (Light)
- Aviation Brigades
- Civil Affairs

1st Brigade (BCST), 78th TSD -



Discussion

- OPFOR Certification POI
- OPFOR Checklist



“PAINT THE BATTLEFIELD” OPFOR CHECKLIST



Date: _____

Exercise POC: _____

Exercise # _____.

Exercise Date: _____.

Scenario/Playbox:

Type Sim: (circle one) BBS, CBS, CSSTSS, SPECTRUM, JANUS

What Capabilities-Based OPFOR Model? (circle one) Northland, Orangeland, Marcalan,

Other, explain:

1. What is the *mission* of the OPFOR for this Exercise? State the Mission:

1A. What is the Exercise Directors Intent? (eg. Portray front line units slowly retreating north. Execute limited number of level I attacks. Introduce a level III airborne force vic _____ on/about DTG _____ to disrupt logistics and secure _____.

1B. Free Play, Scripted, or Zones of Free Play?

1st Brigade (BCST), 78th TSD -



"PAINT THE BATTLEFIELD" OPFOR CHECKLIST (cont.)

2. Should OPFOR Rep Brief at the CEB or Brief Separately?

3. What levels do you think the Icons should be built for OPFOR? Include *Size* and *Strength*:

Degrade % at STARTEX_____ %

What Units?

4. Starting Locations of OPFOR Units at STARTEX:

**5. Use SPF and "stay behind troops"? _____ How many teams? _____
Define the make-up of the
team_____.**

6. Any special type missions? What type? White Forces played?

7. OPFOR required to play BICM?

1st Brigade (BCST), 78th TSD -



“PAINT THE BATTLEFIELD” OPFOR CHECKLIST (cont.)



**8. Will Chemical Play/WMD be authorized? What kind of *agents* do you want?
What vicinity?**

**Location of ChemStrike(s):
Specific Delivery Systems:**

9. Will BLUE AIR PLAY? What role? (air to air, CAS, BAI, rotary wing missions):

**10. Red Air Play: Number of Sorties Authorized? Type Air Mission needed?
Type Aircraft required?**

**Does the possibility of Air Insertion or Air Drop exists?
What level threat (I, II, III)?
Location(s)?**

11. Counterbattery by OPFOR fire required/authorized? Notify Ex Dir prior to Counterbattery fire?

1st Brigade (BCST), 78th TSD -



"PAINT THE BATTLEFIELD" OPFOR CHECKLIST (cont.)



- 12. Missile Play: Frog/Scuds/SS21/Cruise/Dong : Number Authorized:
Authorized to Attack lucrative/Doctrinally Correct Targets? Define the
parameters to use Missiles:**
- 13. Mines and Obstacles: Authorized? Do You Require Bridge(s) Destroyed?
Location:**
- 14. Define parameters to use Mines and Obstacles:**
- 15. Constraints:**
- 16. Resupply Rate (BBS): How will OPFOR be Re-supplied? Self-Supply given
to OPFOR?**

**HRC will re-supply?
How often?**



"PAINT THE BATTLEFIELD" OPFOR CHECKLIST (cont.)

17. **Input to MSEL: Would you like OPFOR input to MSEL?
Where/When?**
18. **OPFOR REQUIRES MSEL before the XR. Poc to send the MSEL is**

_____, Ph. _____
_____ . E-
mail: _____
19. **Are there any MSR's requiring mines or ambush? Name and location?
Time window/Conditions?**
20. **Do you require OPFOR to brief at the Battle Hand-Off? AAR? Do
you require a VCR tape to be done to go to the remote site?**



"PAINT THE BATTLEFIELD" OPFOR CHECKLIST (cont.)



- 21. Do you require OPFOR to brief at the Battle Hand-Off? AAR? Do you require a VCR tape to be done to go to the remote site?**
- 22. Will OPFOR use BLUFOR Phase and Control Lines for Better Control ?**
Should OPFOR develop their own phase and control lines? _____
- 23. Will BLUFOR Play ADA? _____. Will OPFOR Play ADA? _____**
- 24. Does OPFOR need to plan to conduct SEAD missions and build Strike Packages?**
- 25. Collection Plan: What do you want the OPFOR to capture to aid in the AAR? Give details.**



LIGHTNING DIVISION



PAINT THE BATTLEFIELD” OPFOR CHECKLIST (cont.)

26. REMARKS: List any items that help paint the battlefield and define the rules of engagement (ROE)/combat battle instructions (CBI). To minimize “magic moves”, coordinate with OPFOR to see if the task you need can be done in a doctrinally correct manner that the system can replicate. (OPFOR’s goal is to use zero magic moves.)



Questions?